

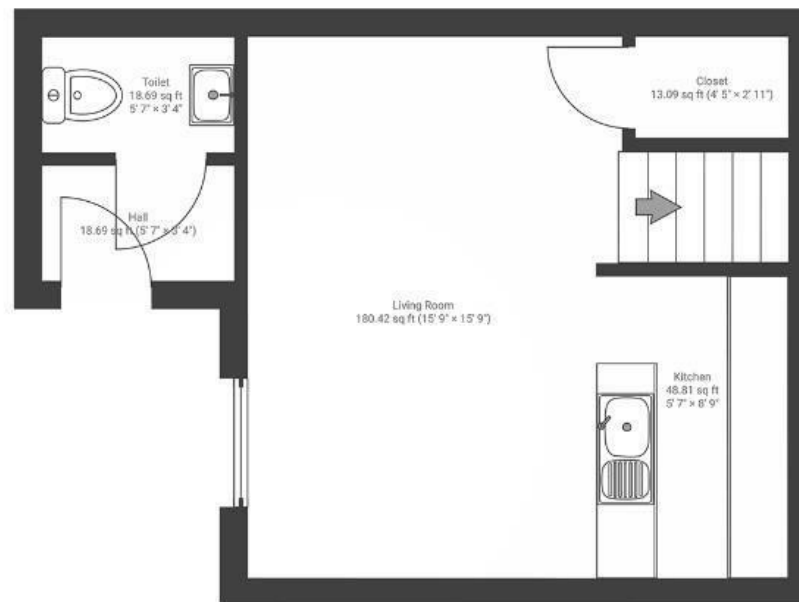
# Snowberry Walk

## ST. GEORGE

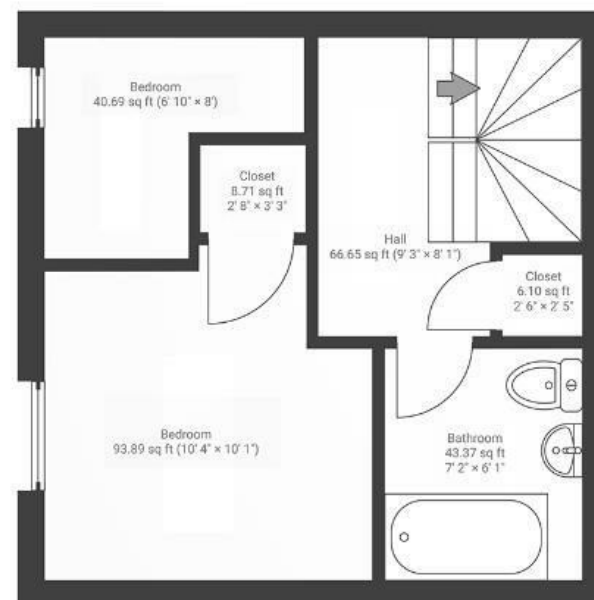
APPROXIMATE FLOOR AREA  
54 SQM / 581 SQFT



GROUND FLOOR



FIRST FLOOR



**Boardwalk**

# Snowberry Walk

ST. GEORGE, BRISTOL



£325,000



2 Bedrooms



BS5 7DG



2 Bathrooms

*"Snowberry Walk was a great first home, we loved living in this community and now our tenants do too. The Bristol & Bath Railway Path is just a few minutes from the front door, 13 miles of peaceful traffic free path all the way to Bath!"*

